

Engine – Standard

Engine Model	Cat [®] C9 ACERT™	
Gross Power	159 kW	213 hp
Net Power – Caterpillar	138 kW	185 hp
Net Power – ISO 9249	138 kW	185 hp
Net Power – SAE J1349	136 kW	183 hp
Net Power – EU 80/1269	138 kW	185 hp
Net Power – DIN 70020	192 PS	
Bore	112 mm	4.4 in
Stroke	149 mm	5.9 in
Displacement	8.8 L	537 in ³

Engine – XL / XW / LGP

Engine Model	Cat C9 ACERT™	
Gross Power	170 kW	228 hp
Net Power – Caterpillar	149 kW	200 hp
Net Power – ISO 9249	149 kW	200 hp
Net Power – EU 80/1269	149 kW	200 hp
Net Power – SAE J1349	148 kW	198 hp
Net Power – DIN 70020	207 PS	
Bore	112 mm	4.4 in
Stroke	149 mm	5.9 in
Displacement	8.8 L	537 in ³

- Engine ratings at 1,850 rpm
- Net power advertised is the power available at the flywheel when the engine is equipped with fan at maximum speed, air cleaner, muffler, and alternator
- No derating required up to 2286 m (7,500 ft) altitude, beyond 2286 m (7,500 ft) automatic derating occurs
- Maximum altitude of 3048 m (10,000 ft)

Transmission

5 Speed		3 Speed	
1.5 Forward	1	3.75 km/h	2.33 mph
2.0 Forward		5.15 km/h	3.2 mph
2.5 Forward	2	6.58 km/h	4.09 mph
3.0 Forward		8.53 km/h	5.3 mph
3.5 Forward	3	11.44 km/h	7.11 mph
1.5 Reverse	1	4.83 km/h	3 mph
2.0 Reverse		6.6 km/h	4.1 mph
2.5 Reverse	2	8.4 km/h	5.22 mph
3.0 Reverse		10.94 km/h	6.8 mph
3.5 Reverse	3	14.55 km/h	9.04 mph

Service Refill Capacities

Fuel Tank	424 L	112 gal
Cooling System	76.8 L	18.5 gal
Engine Crankcase	28 L	7.4 gal
Power Train	145.7 L	38.5 gal
Final Drives (each)	13.6 L	3.6 gal
Roller Frames (each)	24.6 L	6.5 gal
Pivot Shaft Compartment	1.9 L	1.3 gal
Hydraulic Tank	51.5 L	13.6 gal

Weights

Operating Weight

STD A	18 737 kg	41,298 lb
STD SU	18 393 kg	40,550 lb
XL A	20 319 kg	44,795 lb
XL SU	20 148 kg	44,420 lb
XL VPAT	21 178 kg	46,690 lb
XW A	21 184 kg	46,703 lb
XW VPAT	21 444 kg	47,276 lb
XW SU	20 739 kg	45,723 lb
LGP S	21 783 kg	48,024 lb
LGP VPAT	23 119 kg	50,968 lb

Shipping Weight

STD A	14 776 kg	32,576 lb
STD SU	14 776 kg	32,576 lb
XL A	16 771 kg	36,974 lb
XL SU	16 771 kg	36,974 lb
XL VPAT	17 246 kg	38,022 lb
XW A	17 432 kg	38,431 lb
XW SU	17 432 kg	38,431 lb
XW VPAT	17 784 kg	39,208 lb
LGP S	18 915 kg	41,701 lb
LGP VPAT	19 113 kg	42,135 lb

- Operating weight includes lubricants, coolant, full fuel tank, standard track, cab, hydraulic controls, drawbar and operator.
- Shipping weight includes lubricants, coolant, cab, hydraulic controls, standard track and 10 percent fuel.

Hydraulic Controls – Pump

RPM at rated Engine Speed – Implement	1,965 rpm	
RPM at rated Engine Speed – Steering	2,625 rpm	
Pump Output – Implement	189 L/min	49.9 gal/min
Pump Output – Steering	179 L/min	47.3 gal/min
Lift Cylinder Flow	189 L/min	49.9 gal/min
Tilt Cylinder Flow	80 L/min	21.1 gal/min
Ripper Cylinder Flow	189 L/min	49.9 gal/min
Angle Cylinder Flow – VPAT	170 L/min	44.9 gal/min

Hydraulic Controls – Main Relief Valve

Pressure Setting – Steering	41 700 kPa	6,048 psi
Pressure Setting – Implement (Non-VPAT)	21 700 kPa	3,147 psi
Pressure Setting – Implement (VPAT)	24 440 kPa	3,545 psi

Hydraulic Controls – Maximum Operating Pressure (Non-VPAT)

Bulldozer – Lift	19 300 kPa	2,799 psi
Bulldozer – Tilt	19 300 kPa	2,799 psi
Ripper	19 300 kPa	2,799 psi

Hydraulic Controls – Maximum Operating Pressure (VPAT)

Bulldozer – Lift	21 550 kPa	3,126 psi
Bulldozer – Tilt	21 550 kPa	3,126 psi
Bulldozer – Angle	21 550 kPa	3,126 psi
Ripper	19 300 kPa	2,799 psi

Ripper

Type	Fixed Parallelogram	
Number of Pockets	3	
Overall Beam Width	2202 mm	87 in
Beam Cross Section	216 × 254 mm	8.5 × 10 in
Maximum Clearance Raised (under tip, pinned in bottom hole)	511 mm	20.1 in
Maximum Penetration	500 mm	19.7 in
Maximum Penetration Force	6603 kg	14,557 lb
Pryout Force	9134 kg	20,137 lb
Weight – With One Shank	1634 kg	3,606 lb
Each Additional Shank	74 kg	163 lb

Winch

Winch Model	PA 56	
Weight	1179 kg	2,600 lb
Oil Capacity	67 L	17.8 gal
Winch and Bracket Length	1210 mm	47.6 in
Winch Case Length	1210 mm	47.6 in
Winch Case Width	975 mm	38.4 in
Increased Tractor Length – STD	517 mm	20.4 in
Increased Tractor Length – XL/XW	517 mm	20.4 in
Increased Tractor Length – LGP	397 mm	15.6 in
Drum Diameter	254 mm	10 in
Drum Width	330 mm	13 in
Flange Diameter	504 mm	19.8 in
Drum Capacity – 22 mm (0.88 in)	88 m	290 ft
Drum Capacity – 25 mm (1.0 in)	67 m	220 ft
Drum Capacity – 29 mm (1.13 in)	67 m	220 ft
Ferrule Size (O.D. × Length)	54 × 67 mm	2.10 × 2.63 in

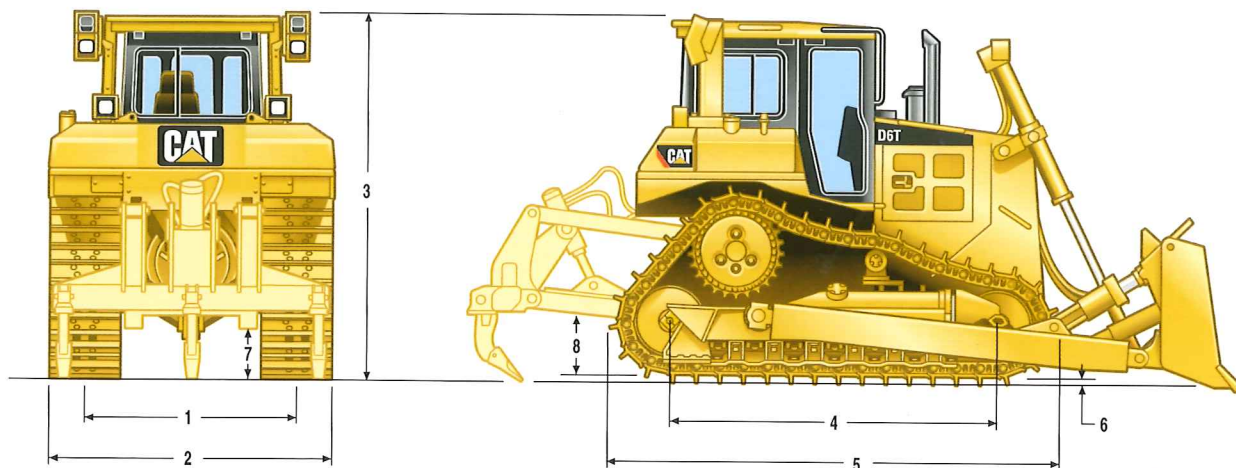
Standards

ROPS/FOPS	ROPS meets criteria SAE J395, SAE 1040 MAY 94, ISO 3471-1994/ FOPS meets ISO 3449-1992 Level II
Cab	Meets appropriate standards as listed below.
Brakes	Brakes meet criterion SAE J/ISO 10265 MAR99

- The operator sound exposure Leq (equivalent sound pressure level) measured according to the work cycle procedures specified in ANSI/SAE J1166 OCT 98 is 80 dB(A) for cab offered by Caterpillar when properly installed and maintained and tested with the doors and windows closed.
- Hearing protection may be needed when operating with an open operator station and cab (when not properly maintained or doors/windows open) for extended periods or in noisy environment.
- The exterior sound pressure level for the standard machine measured at a distance of 15 meters (49.2 ft) according to test procedures specified in SAE J88 APR 95, mid-gear-moving operation, is 85 dB(A).

Dimensions

All dimensions are approximate.

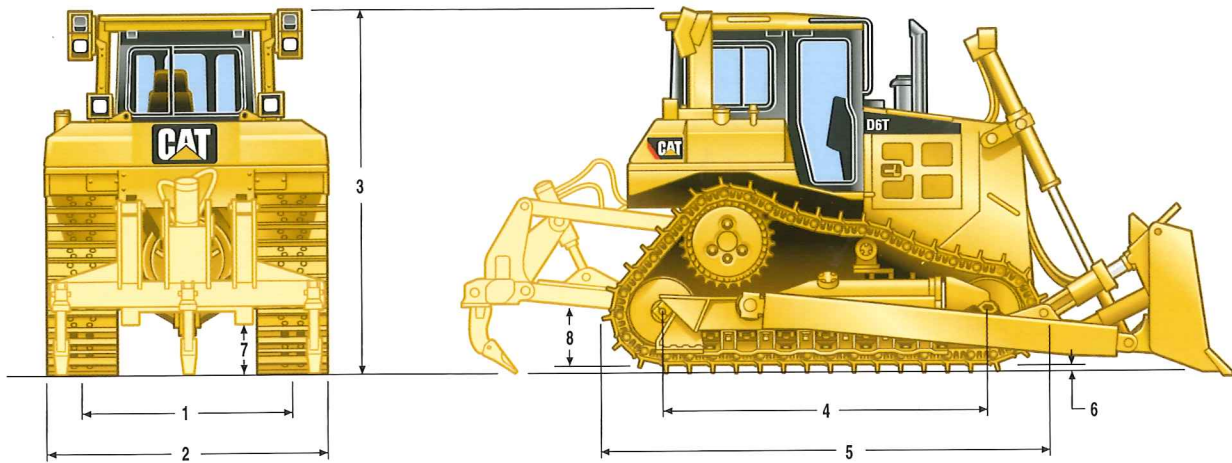


	STD	XL	XL VPAT
1 Track gauge	1880 mm (74 in)	1880 mm (74 in)	2134 mm (84 in)
2 Width of tractor			
Over trunnions	2640 mm (8 ft 8 in)	2640 mm (8 ft 8 in)	—
Without trunnions (std. track)	2440 mm (8 ft 0 in)	2440 mm (8 ft 0 in)	2692 mm (8 ft 10 in)
3 Machine height from tip of grouser:			
Stack	3143 mm (10 ft 4 in)	3143 mm (10 ft 4 in)	3143 mm (10 ft 4 in)
ROPS	3195 mm (10 ft 6 in)	3195 mm (10 ft 6 in)	3195 mm (10 ft 6 in)
4 Length of track on ground	2664 mm (8 ft 9 in)	2871 mm (9 ft 5 in)	2871 mm (9 ft 5 in)
5 Length of basic tractor	3860 mm (12 ft 0 in)	3860 mm (12 ft 8 in)	3860 mm (12 ft 8 in)
With following attachments add:			
Drawbar	217 mm (8.5 in)	217 mm (8.5 in)	217 mm (8.5 in)
Ripper Multi-Shank (tip at ground line)	1403 mm (4 ft 7 in)	1403 mm (4 ft 7 in)	1403 mm (4 ft 7 in)
Winch	517 mm (1 ft 8 in)	517 mm (1 ft 8 in)	517 mm (1 ft 8 in)
S Blade	1043 mm (3 ft 5 in)	—	—
SU Blade	1235 mm (4 ft 1 in)	1472 mm (4 ft 10 in)	—
A Blade	1147 mm (3 ft 9 in)	1349 mm (4 ft 5 in)	—
VPAT Blade	—	—	1524 mm (5 ft 0 in)
6 Height of grouser	65 mm (2.6 in)	65 mm (2.6 in)	65 mm (2.6 in)
7 Ground clearance	383 mm (1 ft 3 in)	383 mm (1 ft 3 in)	383 mm (1 ft 3 in)
Track pitch	203 mm (8.0 in)	203 mm (8.0 in)	203 mm (8.0 in)
Number of shoes per side	39	41	41
Number of rollers per side	6	7	7
Standard shoe	560 mm (22 in)	560 mm (22 in)	560 mm (22 in)
Ground contact area (std. track)	2.98 m ² (4620 in ²)	3.22 m ² (4972 in ²)	3.22 m ² (4972 in ²)
Ground pressure*	0.614 kg/cm ² (8.74 psi)	0.623 kg/cm ² (8.90 psi)	0.658 kg/cm ² (9.36 psi)
8 Drawbar height	576 mm (1 ft 11 in)	576 mm (1 ft 11 in)	576 mm (1 ft 11 in)
From ground face of shoe	511 mm (1 ft 8 in)	511 mm (1 ft 8 in)	511 mm (1 ft 8 in)

*STD, XL, XW with SU blade, with no rear attachments unless otherwise specified.

Dimensions

All dimensions are approximate.



	XW	XW VPAT	LGP S	LGP VPAT
1 Track gauge	2032 mm (80 in)	2286 mm (90 in)	2286 mm (90 in)	2286 mm (90 in)
2 Width of tractor				
Over trunnions	2950 mm (9 ft 8 in)	—	3480 mm (11 ft 5 in)	—
Without trunnions (std. track)	2794 mm (9 ft 2 in)	2997 mm (9 ft 10 in)	3193 mm (10 ft 6 in)	3150 mm (10 ft 4 in)
3 Machine height from tip of grouser:				
Stack	3143 mm (10 ft 4 in)	3143 mm (10 ft 4 in)	3193 mm (10 ft 6 in)	3193 mm (10 ft 6 in)
ROPS	3195 mm (10 ft 6 in)	3195 mm (10 ft 6 in)	3245 mm (10 ft 8 in)	3245 mm (10 ft 8 in)
4 Length of track on ground	2871 mm (9 ft 5 in)	2871 mm (9 ft 5 in)	3275 mm (10 ft 9 in)	3275 mm (10 ft 9 in)
5 Length of basic tractor	3860 mm (12 ft 8 in)	3860 mm (12 ft 8 in)	4247 mm (13 ft 11 in)	4247 mm (13 ft 11 in)
With following attachments add:				
Drawbar	217 mm (8.5 in)	217 mm (8.5 in)	251 mm (9.9 in)	251 mm (9.9 in)
Ripper Multi-Shank (tip at ground line)	1403 mm (4 ft 7 in)	1403 mm (4 ft 7 in)	—	—
Winch	517 mm (1 ft 8 in)	517 mm (1 ft 8 in)	397 mm (1 ft 4 in)	397 mm (1 ft 4 in)
S Blade	—	—	1218 mm (4 ft 0 in)	—
SU Blade	1472 mm (4 ft 10 in)	—	—	—
A Blade	1349 mm (4 ft 5 in)	—	—	—
VPAT Blade	—	1524 mm (5 ft 0 in)	—	1743 mm (5 ft 9 in)
6 Height of grouser	65 mm (2.6 in)	65 mm (2.6 in)	65 mm (2.6 in)	65 mm (2.6 in)
7 Ground clearance	383 mm (1 ft 3 in)	383 mm (1 ft 3 in)	433 mm (1 ft 5 in)	433 mm (1 ft 5 in)
Track pitch	203 mm (8.0 in)	203 mm (8.0 in)	203 mm (8.0 in)	203 mm (8.0 in)
Number of shoes per side	41	41	45	45
Number of rollers per side	7	7	8	8
Standard shoe	760 mm (30 in)	710 mm (28 in)	915 mm (36 in)	785 mm (31 in)
Ground contact area (std. track)	4.36 m ² (6780 in ²)	4.08 m ² (6328 in ²)	5.99 m ² (9288 in ²)	5.16 m ² (7998 in ²)
Ground pressure*	0.472 kg/cm ² (6.72 psi)	0.524 kg/cm ² (7.45 psi)	0.362 kg/cm ² (5.15 psi)	0.446 kg/cm ² (6.35 psi)
8 Drawbar height	576 mm (1 ft 11 in)	576 mm (1 ft 11 in)	626 mm (2 ft 1 in)	626 mm (2 ft 1 in)
From ground face of shoe	511 mm (1 ft 8 in)	511 mm (1 ft 8 in)	561 mm (1 ft 10 in)	561 mm (1 ft 10 in)

*STD, XL, XW with SU blade, with no rear attachments unless otherwise specified.

Weight

All dimensions are approximate.

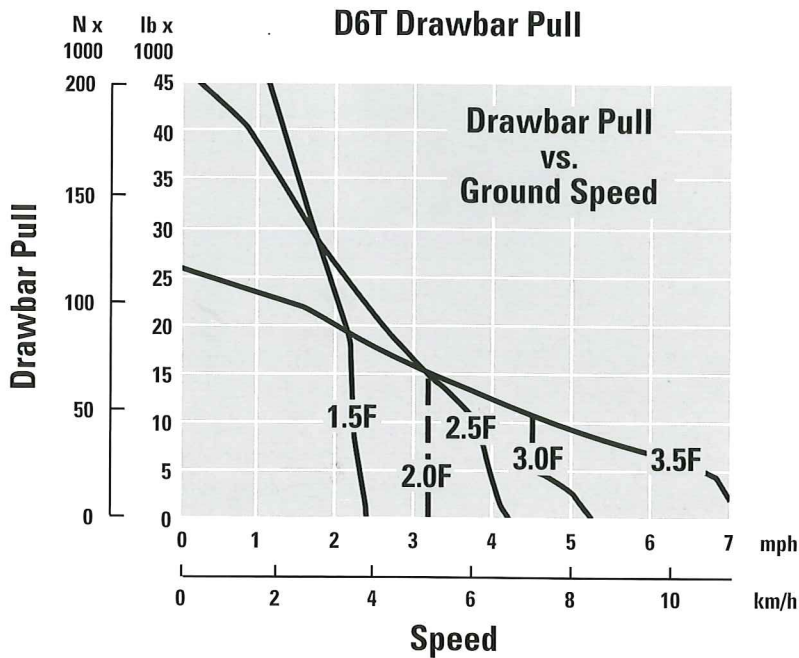
Bulldozer Specifications

		S STD	S LGP	SU STD	SU XL	SU XW	A † STD	A † LGP	A † XL	A † XW	VPAT XL	VPAT XW	VPAT LGP
Blade Capacity	m ³ yd ³	3.89 5.09	3.75 4.90	5.61 7.34	5.61 7.34	5.62 7.35	3.93 5.14	5.22 6.82	3.93 5.14	4.30 5.63	4.73 6.19	5.10 6.67	4.32 5.65
Width	mm ft	3360 11.00	4063 13.33	3260 10.66	3260 10.66	3556 11.66	4166 13.66	5070 16.63	4165 13.66	4200 13.75	3880 12.73	4160 13.65	4160 13.65
Height	mm in	1257 50	1101 44	1412 56	1412 56	1412 56	1155 45	1134 45	1155 45	1169 46	1295 51	1295 51	1191 47
Digging Depth	mm in	473 19	655 26	473 19	459 18	459 18	506 20	828 33	524 21	500 20	737 29	737 29	672 26
Ground Clearance	mm in	1104 44	1083 43	1104 44	1195 47	1195 47	1142 45	1088 43	1205 47	1242 49	1174 46	1174 46	1230 48
Max. Tilt	mm in	765 30	701 28	743 29	743 29	743 29	408 16	476 19	408 16	408 16	440 17	460 18	502 20
Weight*	kg lb	2599 5,730	2836 6,252	2699 5,950	2973 6,554	2949 6,501	3050 6,724	3430 7,562	3150 6,945	3400 7,496	3560 7,848	3650 8,047	3620 7,981
Weight**	kg lb	— —	— —	— —	— —	— —	— —	— —	— —	— —	1593 3,512	1681 3,705	1591 3,507

* Includes push arms, blade, blade tilt cylinder(s), cutting edges and miscellaneous hardware components

**VPAT blade only

† Angle dozers include two tilt cylinders.



Standard Equipment

Standard equipment may vary. Consult your Caterpillar dealer for details.

ELECTRICAL

- Alarm, backup
- Alternator, 95-amp
- Batteries, two maintenance-free 12V (24V system)
- Converter, 12V, 10 amp with two power outlets
- Diagnostic connector
- Horn, forward warning

OPERATOR ENVIRONMENT

- Air conditioner, under-hood
- Armrests, adjustable
- Cab, ROPS/FOPS, sound-suppressed
- Differential steering control with touch shift
- Electronic distance travel indicator
- Caterpillar Monitoring System:
 - Temperature (coolant, hydraulic, power train), fuel level, tachometer, odometer, gear indicator, and diagnostics

- Foot pads, dash
- Heater
- Hourmeter, electronic
- Mirror, rearview
- Pedal, decelerator
- Pilot operated hydraulic controls with electronic deactivation switch
- Radio ready
- Seat, adjustable, contour suspension with gray fabric
- Seat belt, retractable 76 mm (3 in)
- Throttle switch, electronic
- Wipers, intermittent

POWER TRAIN

- Advanced Modular Cooling System (AMOCS)
- Aftercooler, air-to-air (ATAAC)
- Air cleaner, pre-cleaner with strata tube dust ejector
- Air filter with electronic service indicator
- C9 ACERT, diesel, Electronic Unit Injection (EUI)
- Coolant, extended life
- Electronically controlled powershift transmission
- Fan, blower, direct drive
- Final drives, 3-planet single reduction planetary
- Fuel priming pump, electric
- Muffler with mitered stack
- Parking brake, electronic
- Prescreener
- Shift management:
 - Controlled throttle, load compensating
 - Automatic directional and downshift
- Starting aid, automatic ether
- Planetary Transmission, with torque divider
- Turbocharger, waste-gate
- Water separator
- Multi Velocity Program, five speed

UNDERCARRIAGE

- Carrier roller
- Equalizer bar, heavy-duty
- Guards, center track guiding (LGP)
- Guards, end guiding
- Idlers – SystemOne, center tread, lifetime lubricated
- Sprocket rim segments, replaceable
- Track adjusters, hydraulic
- Track roller frames, tubular
- Track rollers, lifetime lubricated
- Track, SystemOne, moderate service:
 - Standard arrangement – 560 mm (22 in), 39-section
 - XL arrangement –
 - 560 mm (22 in), 41 section, (VPAT models)
 - 560 mm (22 in), 41 section (non-VPAT models)
 - XW arrangement –
 - 710 mm (28 in), 41 section (VPAT models)
 - 760 mm (30 in), 41 section (non-VPAT models)
 - LGP arrangement –
 - 785 mm (31 in) offset, 45-section (VPAT models)
 - 915 mm (36 in), 45-section (non-VPAT models)

OTHER STANDARD EQUIPMENT

- CD-ROM parts book
- Cooler, hydraulic oil
- Engine enclosures, perforated
- Front pull device
- Guards, hinged bottom
- Hood, perforated
- Hydraulic, load sensing, dozer lift and tilt
- Product Link ready
- Radiator doors, hinged, fan blast deflector
- Scheduled oil sampling ports:
 - Engine oil, power train oil, hydraulic oil, and engine coolant
- Vandalism protection:
 - Cap locks for fluid compartments and battery box

Optional Equipment

Optional equipment may vary. Consult your Caterpillar dealer for details.

ELECTRICAL

- AccuGrade® Ready Option (Laser/GPS)
- Alternator, 150 amp (brushless)
- Alternator, 95 amp (ducted)
- Lights, supplemental:
 - 11 construction (not for VPAT models)
 - 11 waste disposal/VPAT package
 - 7 (for use with VPAT model)
 - 7 (not for VPAT models)
- Sweeps
- Machine Security System
- Power converter
- Product Link

OPERATOR ENVIRONMENT

- Air conditioner (ROPS mounted)
- Air suspension seat, cloth (for use with cab)
- Canopy Arr. (OROPS)
- Glass, ultra strength
- Seat – vinyl (for use with cab)
- Steps, heavy duty grab handles

POWER TRAIN

- Drains, ecology (torque converter and transmission)
- Fan: Demand (clutch drive), ejector, Flexxaire, or reversible
- Grid, radiator core protector
- Oil change system, high speed engine and power train
- Precleaner: turbine with or without screen, or with prescreener
- Radiator AMOCS, waste handling, 6FIN/IN cores; abrasion resistant cores
- Starting Aids
 - Batteries, heavy duty
 - Heater, engine coolant
- Thermal shield

UNDERCARRIAGE

- SystemOne™, Extreme Service (ES), Moderate Service (MS)
- Track, Pairs (STD/XL)
 - 560 mm (22 in), ES; 610 mm (24 in) MS or ES
- Track, Pairs (XW, non-VPAT)
 - 762 mm (30 in) ES or Trap
- Track, Pair (LGP, non-VPAT)
 - 914 mm (36 in) ES or Trap
- Heavy-duty, Extreme Service (ES), Moderate Service (MS)
- Track, Pairs (STD/XL)
 - 560 mm (22 in) MS or ES; 610 mm (24 in) MS or ES
- Track, Pairs (XW)
 - 762 mm (30 in), MS or ES
- Track, Pairs (LGP, non-VPAT)
 - 914 mm (36 in) MS

GUARDS

- Front pull hook, extreme service, sealed
- Crankcase – extreme service sound suppressed, sealed
- Final drive clamshell
- Final drive seals
- Fuel tank with or without mechanical winch or ripper
- Precleaner
- Radiator, bottom heavy-duty
- Radiator, heavy-duty, punched (non-VPAT)
- Radiator, hinged, two-piece, heavy-duty (non-VPAT)
- Radiator, hinged, 2-piece heavy-duty (VPAT)
- Rear heavy-duty, transmission
- Screen, rear – with ROPS mounted air conditioner
- Seals, idler GP
- Striker bar GP, front and rear
- Sweeps (not compatible with VPAT machines)
- SystemOne™
 - Guard, track guiding, center (STD, XL, XW)
 - Guard, track roller (STD, XL, XW, LGP)

HYDRAULICS

- Ripper
- Winch
- AccuGrade

RIPPERS

- Ripper, multi-shank
- Ripper Attachments
 - Tooth, D6 multi-shank ripper
 - Curved or straight (up to 3)

WINCH ARRANGEMENTS (PACCAR)

- Fairlead, 3 rollers
- Fairlead roller (4th roller)
- Installation arrangement, winch
- Winch arr. – slow speed with freespool (slow speed) or (normal speed)

OTHER ATTACHMENTS

- Counterweight, rear
- Counterweight, additional rear slab
- Drawbar, rigid, long or short
- Radio, 12V AM/FM cassette
- Sound suppression